

PRESSURE REDUCING VALVE

Model 720

Hydraulically operated, pressure reducing control valve that reduces higher upstream pressure to lower constant downstream pressure, regardless of fluctuating demand or varying upstream pressure.

BERMAD 700 series valves are hydraulic, oblique pattern, globe valves with a raised seat assembly and double chamber unitized actuator, that can be disassembled from the body as a separate integral unit. The valves hydrodynamic body is designed for unobstructed flow path and provides excellent and highly effective modulation capacity for high differential pressure applications. The valves are available in the standard configuration or with an Independent Check Feature code "2S". The 700 Valves operate under difficult operation conditions with minimal cavitation and noise. They meet size and dimensions requirements of various standards.



Features and Benefits

- Designed to - stand up to the toughest conditions
 - Excellent anti-cavitation properties
 - Wide flow range
 - High stability and accuracy
 - Drip tight sealing
- Double chamber design
 - Moderated valve reaction
 - Protected diaphragm
 - Optional operation in very low pressure
 - Moderated closing curve
- Flexible design - Easy addition of features
- Obstacle free flow pass
- V-Port Throttling Plug (Optional) - Very stable at low flow
- Compatible with various standards
- High quality materials
- In-line serviceable - Easy maintenance

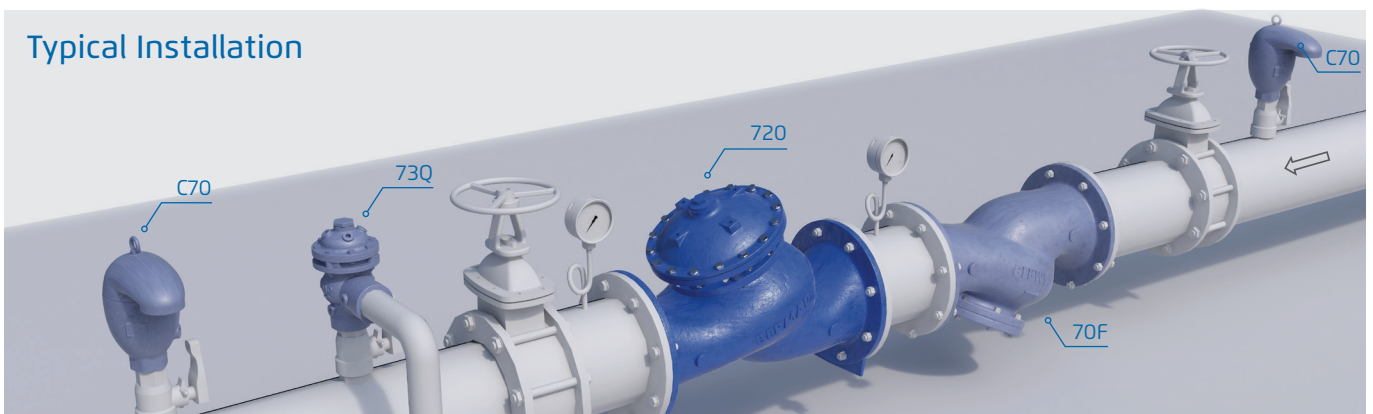
Major Additional Features

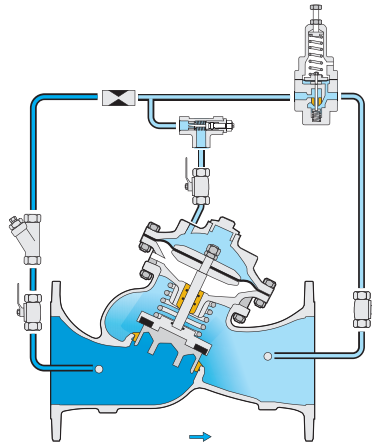
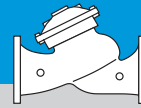
- Fixed Proportion PRV – 720-PD
 - Small flow bypass – 720-2B
 - Pressure management valve – 7PM
 - 3-Way control – 720-X
 - Anti-cavitation cage – 720-C2
 - Safety valve – 720-TC
 - Independent check feature – 720-2S
 - Hydraulic check valve – 720-20
 - Solenoid control – 720-55
 - Electrically selected multi-level setting – 720-45
 - High sensitivity pilot – 720-12
 - Downstream over pressure guard – 720-48
- See relevant BERMAD publications.



Model 720-2B with small flow bypass

Typical Installation





This drawing refers to 1½ – 8"; 40-200 mm sized valves only. For other sizes please refer to the Model's IOM.

Main Valve

Valve Patterns: "Y" (Globe)

Size Range:

1½-24"; 40-600 mm

Pressure Rating: 25 bar; 400 psi

End Connections: Flanged (all standard)

Plug Types: Flat disc, V-port, Cavitation cage

Temperature Rating: 60°C; 140°F for Cold water applications

Optional higher temperature: Available on request

Standard Materials:

Body & actuator: Ductile Iron

Bolts, nuts & studs: Stainless Steel

Internals: Stainless Steel, Tin Bronze & Coated Steel

Diaphragm: Fabric-reinforced synthetic rubber

Seals: Synthetic rubber

Coating: Dark blue Fusion bonded epoxy

Control System

Standard Materials:

Accessories: Stainless Steel, Bronze & Brass

Tubing: Stainless Steel or Copper

Fittings: Stainless Steel or Brass

Pilot Standard Materials:

Body: Stainless Steel, Bronze or Brass

Elastomers: Synthetic Rubber

Spring: Stainless Steel

Internals: Stainless Steel

Pilot Options:

Various pilots and calibration springs are available.

Select according to valve size and operating conditions.

For more details check pressure reducing pilots product pages.

Notes

- Inlet pressure, outlet pressure and flow rate are required for optimal sizing and cavitation analysis.
- Recommended continuous flow velocity: 0.1-6.0 m/sec; 0.3-20 ft/sec.
- Minimum operating pressure: 0.7bar /10 psi. For lower pressure requirements consult factory.

For detailed Engineering & Specification data, IOM and CAD Drawings, visit the Model Page on the [BERMAD](http://www.bermad.com) website.