

PRESSURE REDUCING VALVE

With integrated low flows by-pass

Model 720-2B

Hydraulically operated, pressure reducing control valve that reduces higher upstream pressure to lower constant downstream pressure, with extended stability in off peak flows regulation.

BERMAD 700 series valves are hydraulic, oblique pattern, globe valves with a raised seat assembly and double chamber unitized actuator, that can be disassembled from the body as a separate integral unit. The valves hydrodynamic body is designed for unobstructed flow path and provides excellent and highly effective modulation capacity for high differential pressure applications.

The 700 Valves operate under difficult operation conditions with minimal cavitation and noise. They meet size and dimensions requirements of various standards.



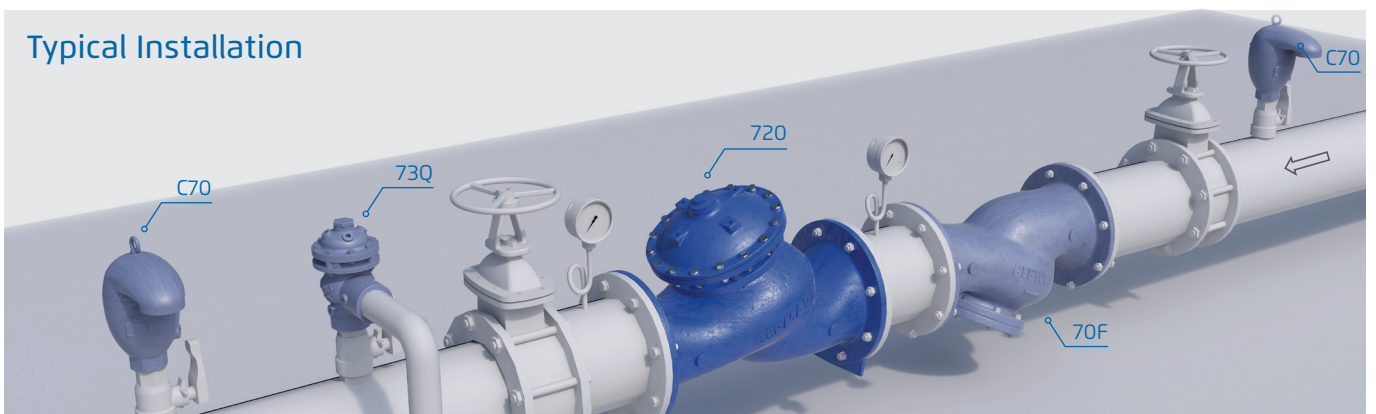
Features and Benefits

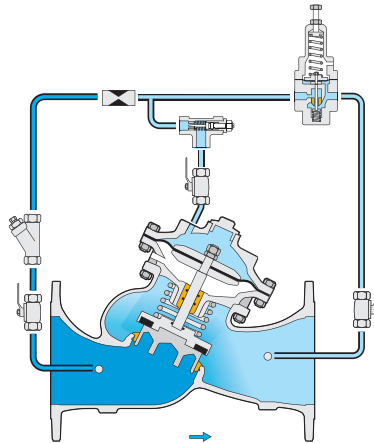
- integrated low flows Direct Acting Pressure reducing valve - extended low flow stability
- Designed to - stand up to the toughest conditions
 - Excellent anti-cavitation properties
 - Wide flow range
 - High stability and accuracy
 - Drip tight sealing
- Double chamber design
 - Moderated valve reaction
 - Protected diaphragm
 - Optional operation in very low pressure
 - Moderated closing curve
- Flexible design - Easy addition of features
- Obstacle free flow pass
- V-Port Throttling Plug (Optional)
- Compatible with various standards
- High quality materials
- In-line serviceable - Easy maintenance

Major Additional Features

- Fixed Proportion PRV – 720-PD-2B
 - 3-Way control – 720-2B-X
 - Hydraulic check valve – 720-20-2B
- See relevant BERMAD publications.

Typical Installation





This drawing refers to 1½ – 8"; 40-200 mm sized valves only. For other sizes please refer to the Model's IOM.

Main Valve

Valve Patterns: "Y" (Globe)

Size Range:

1½-24"; 40-600 mm

Pressure Rating: 25 bar; 400 psi

End Connections: Flanged (all standard)

Plug Types: Flat disc, V-port, Cavitation cage

Temperature Rating: 60°C; 140°F for Cold water applications

Optional higher temperature: Available on request

Standard Materials:

Body & actuator: Ductile Iron

Bolts, nuts & studs: Stainless Steel

Internals: Stainless Steel, Tin Bronze & Coated Steel

Diaphragm: Fabric-reinforced synthetic rubber

Seals: Synthetic rubber

Coating: Dark blue Fusion bonded epoxy

Control System

Standard Materials:

Accessories: Stainless Steel, Bronze & Brass

Tubing: Stainless Steel or Copper

Fittings: Stainless Steel or Brass

Pilot Standard Materials:

Body: Stainless Steel, Bronze or Brass

Elastomers: Synthetic Rubber

Spring: Stainless Steel

Internals: Stainless Steel

Pilot Options:

Various pilots and calibration springs are available.

Select according to valve size and operating conditions.

For more details check pressure reducing pilots product pages.

Notes

- Inlet pressure, outlet pressure and flow rate are required for optimal sizing and cavitation analysis.
- Standard maximal set pressure up to 6.0 bar; 90 psi. for higher calibration consult factory.
- Minimum operating pressure: 1.2 bar/17 psi. For lower pressure requirements consult factory.

For detailed Engineering & Specification data, IOM and CAD Drawings, visit the Model Page on the [BERMAD](http://www.bermad.com) website.